



SGS

ABORIGINAL CONSTRUCTION MONITORING

WEEKLY REPORT

SPREAD 3

SEPTEMBER 25TH TO OCTOBER 1ST

SGS Canada Inc. #1450 – 407 2nd Street SW (14th Floor) , Calgary Alberta T2P2Y3 t: (403) 278-9730 www. sgs.com

ISO 9001: 2008 Registered OHSAS 18001:2007 Registered



Social and Cultural Features

Field Observation	# of occurrences	Description and Mitigation Measures	Mitigation Status	Further Action Required (Yes/No)
Traditional Use Area (hunting, fishing, gathering, trapping)	0			
Rock Formations (rocks of significance, tipi rings, etc.)	0			
Artifacts	0			
Bones	0			
Potential Gravesites	0			

Environmental Features

Field Observation	# of occurrences	Description and Mitigation Measures	Mitigation Status	Further Action Required (Yes/No)
Medicinal or Cultural Plants	0			No
Aquatic Life	0			
Animal Observations or Burrows	0			
Bird Nests	0			
Trees (Red Willow)	0			
Wetlands	100m	Wetland		No
Watercourse Crossing	2	WM1 Canal ROW, South Saskatchewan River	ongoing	No

Additional Observations and Summary of Activities or Concerns

This week started off with mentoring the new SGS hires spending the first couple days mentoring and familiarizing them with spread three roads and right of ways. Majority of my time I focused my attention on the directional drilling at RD 34 SSKP-330+778 WM1 Canal and the site of directional drilling of the South Saskatchewan Crossing.

During the drilling process they go from a 24 in reamer to a 60 in reamer. At the canal they are drilling the 60 in reamer. This is the most crucial part of the drill. Water sampling is done more frequently at the canal. All water samples have been good up to this point and will know more next week.

At the river crossing which will be more of an importance they have just started drilling the first reamer which is 24 in. This crossing will be the utmost importance in the next while.

Observed the ditching crew to make sure that there has been no artifacts found during the process of ditching. I observed the top soil stripping crew to also ensure that no artifacts were found in their process as well.

There was a concern with how fine the top soil is in this area so the tackifying crew is spreading Lignosulphonate Solution (dust suppressant) made from wood risen, dye and water. This solution is biodegradable and environmentally friendly. It is being spread on the top soil.

From the Environmental team's perspective there are currently no Issues that we are aware of.

Photos of Sites Visited & Topics Discussed This Week



Reamer at Canal Crossing



Water sampling from the canal



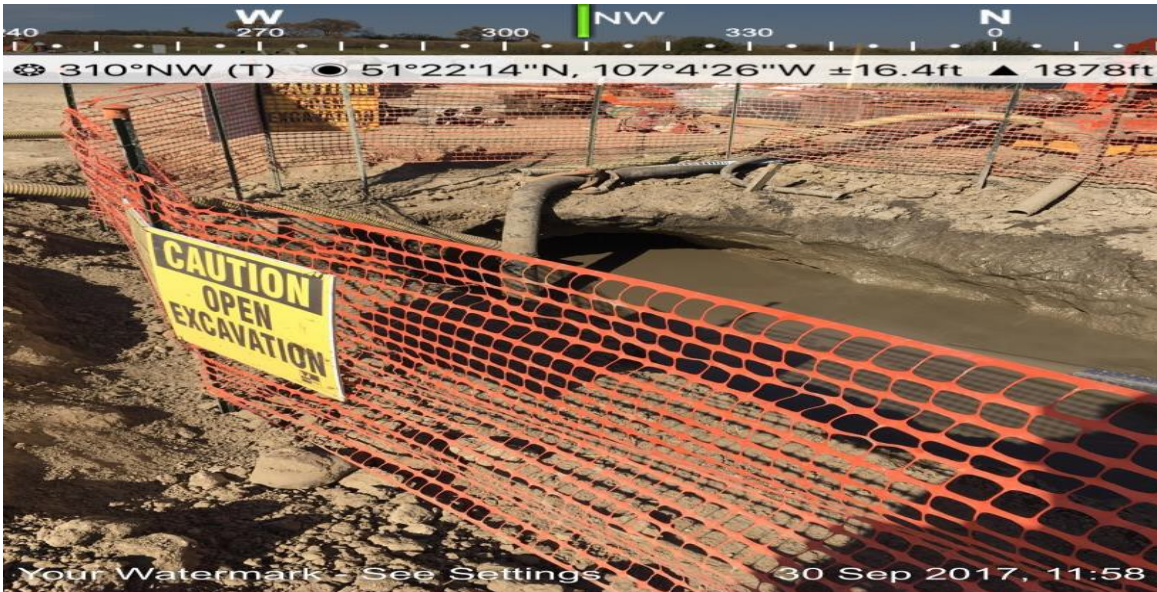
Retrieving water samples from canal



Soil Classification



Tackifying Crew



Directional at the Canal

Approvals

Prepared by



Gary Gopher
Senior Construction Monitor

October 1, 2017

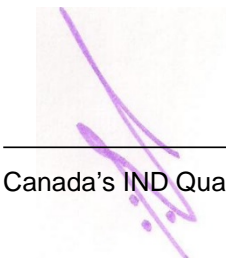
Reviewed by



Joseph Roach
Project Manager

October 1, 2017

Approved by



Canada's IND Quality Manager

October 3, 2017